

*Used with BrightSign HD Video Players*

*Connects Motion Sensor to Player*

The Interface provides a convenient method of connecting and powering a Museum Technology Motion Sensor to BrightSign video players. Connection is to the GPIO (**General Purpose Input Output**). The output of the Interface is connected to GPIO Input 0 (Pin 15).

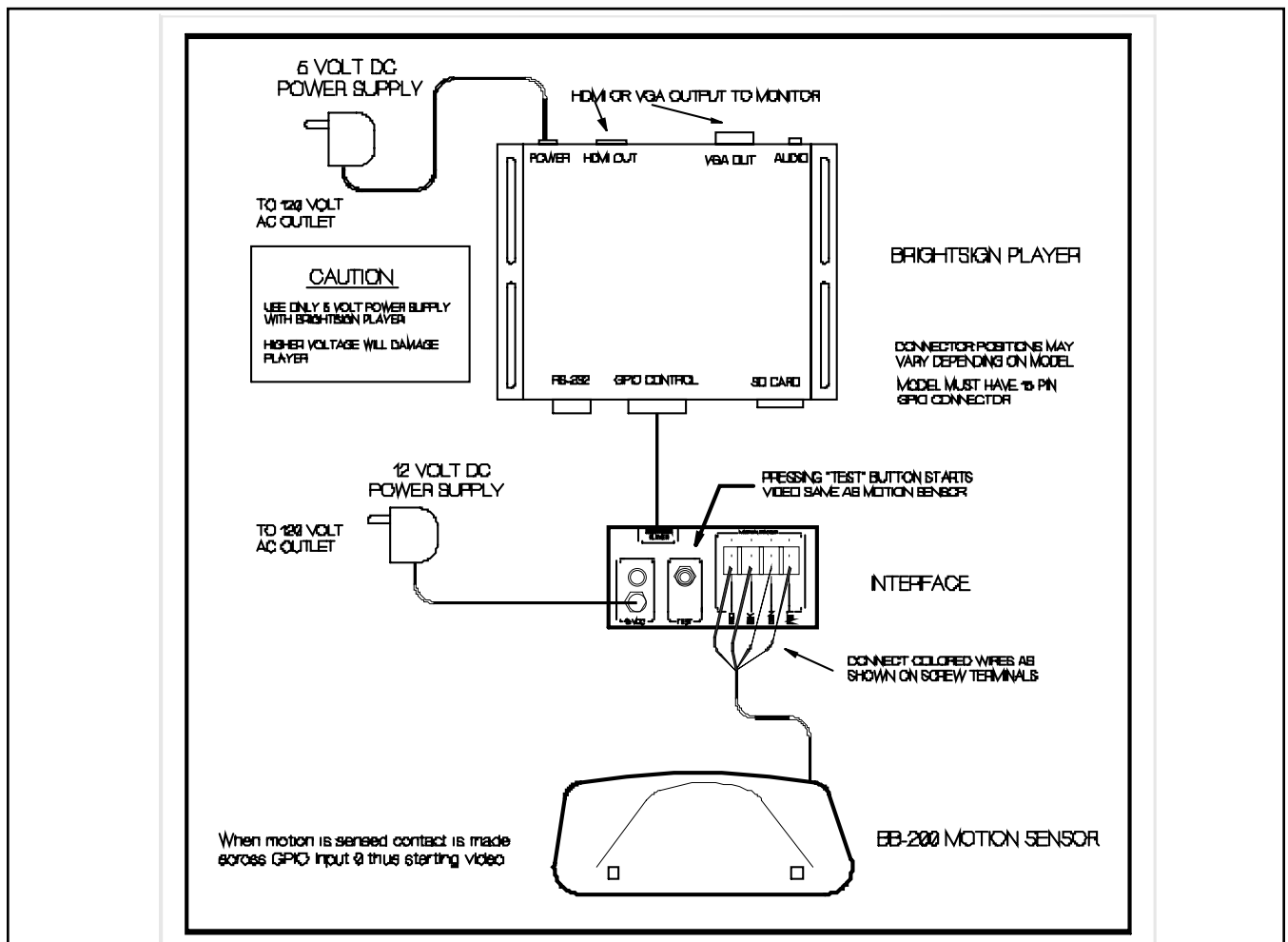
Connection to the Motion Sensor is via a screw-terminal block. Power for the Motion Sensor (12 VDC) is provided.

For convenience, a "Test" button is included. This button duplicates the function of the Motion Sensor. This is useful for test purposes when programming the video or during installation. This allows the system to be tested without the Motion Sensor connected.

**Installation:**

The equipment should be connected as show in the drawing below.

It is suggested to test the installation using the video files supplied either on an SD Memory card or on CD to verify that the equipment is working properly prior to loading the actual video files to be used.



## Preparing the Content

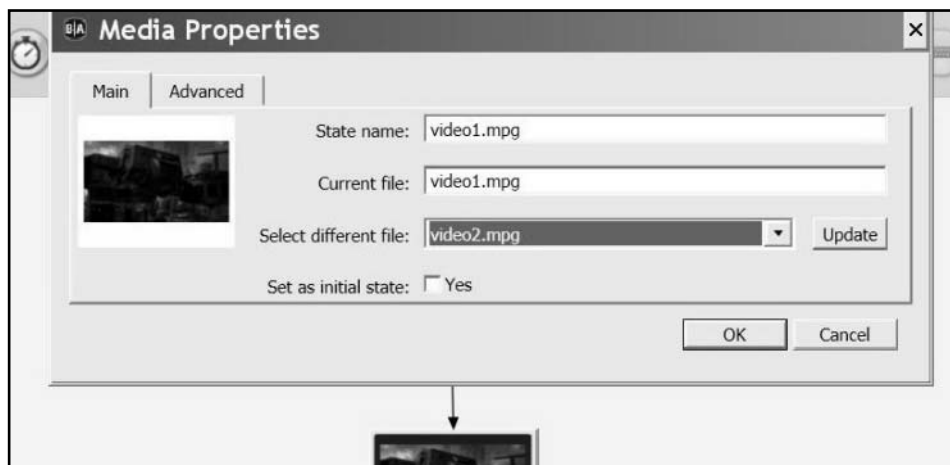
A SD flash memory card is provided. This contains an operating program consisting of an Attract Loop (Attract.mpg) and a short video (Video1.mpg). It is suggested that the system be tested using the supplied SD card. This will ensure that all the equipment is functioning correctly.

The sample program is also included on a CD. This program was generated using the BrightAuthor program, version 3.5.0.24, a copy of which is also on the CD. The latest version of BrightAuthor may be obtained at no charge from [www.brightsign.biz](http://www.brightsign.biz). Full documentation on using BrightAuthor is available at the same website.

BrightAuthor requires the player to be running Firmware version 4.4.44 or higher. The latest version may be downloaded from [www.brightsign.biz](http://www.brightsign.biz). The version number is displayed on the video monitor while the player is powering up.

After the BrightAuthor program is installed, copy the file **One Button** from the supplied CD. Now copy the videos to be played into the same folder. The new files should not have the same names as the existing files: Attract.mpg or Video1.mpg. Open the **One Button** folder and click on the **One Button.bpf** icon. This should launch the BrightAuthor program which consists of two video files: Attract.mpg and video1.mpg. These are the videos that need to be replaced with the actual videos to be used.

To update the file, while on the **Edit** screen in BrightAuthor, double-click on the icon of the file to be changed. In the example below, video1.mpg has been selected causing the **MEDIA PROPERTIES** dialog box to open. Use the **Select different file** pull-down box to select the desired video. Be sure to click on **Update** otherwise the file will not be saved.

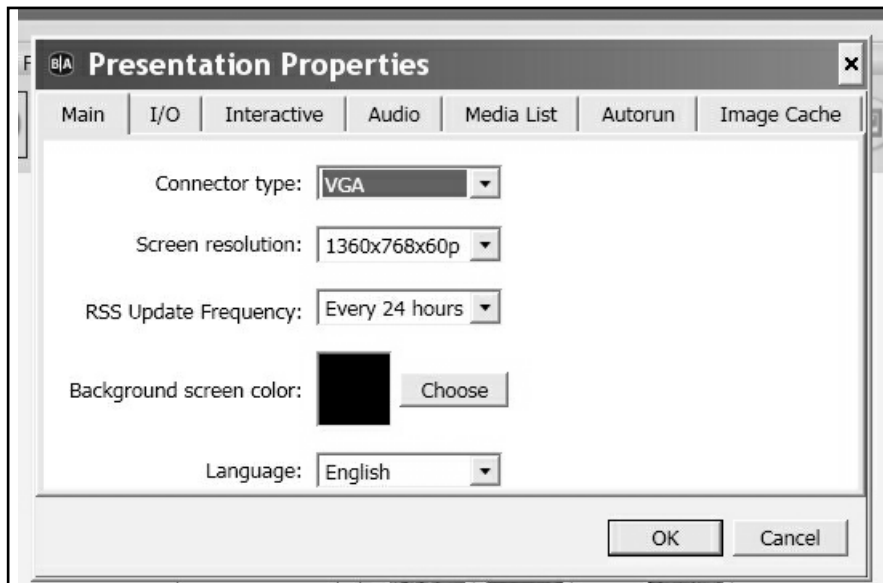


The same technique is used to change the other videos as required. When finished, save the file and use the PUBLISH tab to publish the presentation to the SD memory card.

## Presentation Properties:

Under the main FILE menu, select Presentation Properties.

The Connector Type pull down is used to select the type of connector that is being used with the monitor. The choices are VGA, which is the 15 pin connector commonly used on personal computers. The other option is HDMI, which is standard on flat-screen video monitors. An advantage of HDMI is the same cable that carries the picture also carries the sound, whereas VGA will require a separate patch cord from the BrightSign to the monitor, provided the monitor has built-in sound. Otherwise amplified speakers will be required.



It is suggested that Screen resolution be set to match the available resolution of the monitor being used.

As shipped, the settings are 1920 X 1080, 60P, HDMI Connector, Black Background.

RSS Update Frequency does not apply in this application, so the default 24 hour setting need not be changed.

Background Screen Color sets the color of the default background. Normally, the images will fill the screen, so this color will not be seen. However, if the image doesn't fill the entire screen, the background color will fill in around it. Generally black is a good choice.

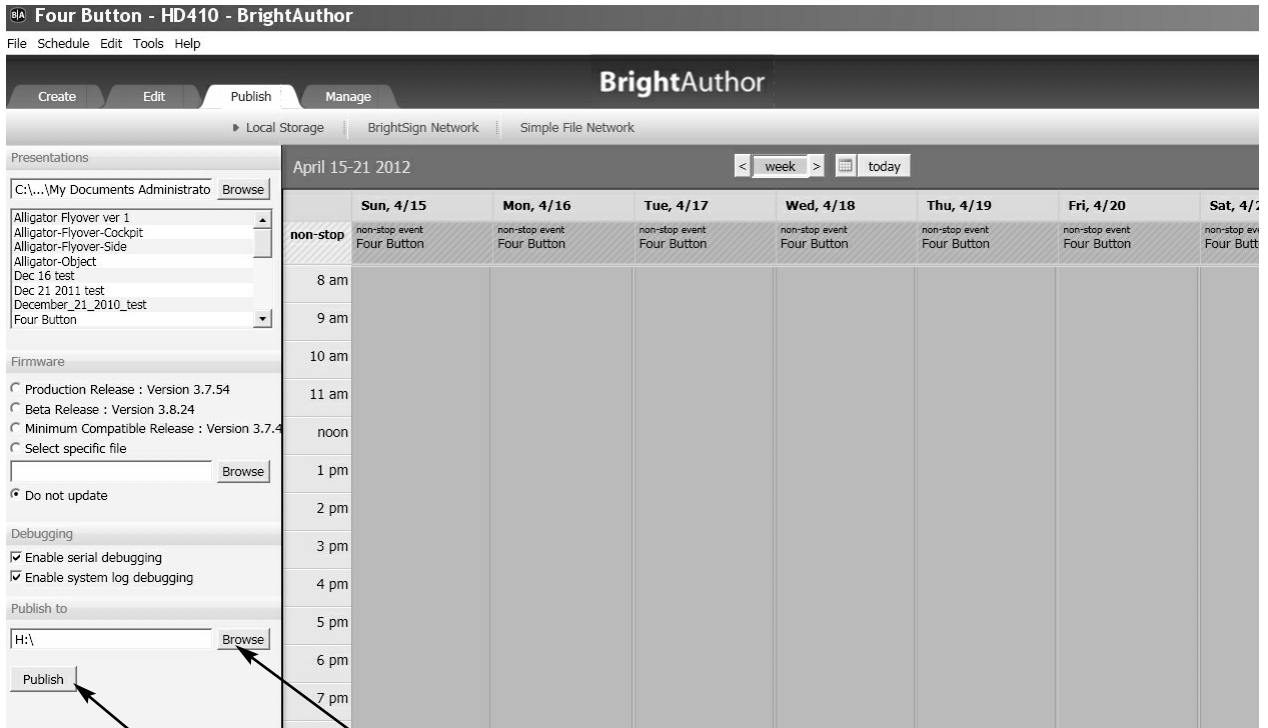
Other settings are available on the main Screen by clicking on the **Zone Properties**. These include various settings relating to the audio, as well as **Image Mode**. The default setting is **Scale to Fit**. Please refer to the BrightSign User's Guide for a discussion of this, and other, settings.

## Publishing

When finished editing the presentation, the next step is to publish it to the SD Flash Memory Card to be used in the player. Although almost any SD card will work, a Class 10 card is recommended because of its high speed characteristic. Of course the card must have sufficient capacity to store the video content. Simply add together the size of the individual videos to arrive at the required size. A card of larger than required capacity may be used.

Use the **file** menu to **Save** the presentation, then click the **Publish** button. When the process finishes, the card may be plugged into the BrightSign player. Make sure that the player is disconnected from its power supply. After inserting the card, reconnect power to the BrightSign. **Allow a minute or so for the player to boot.**

## Publishing Screen



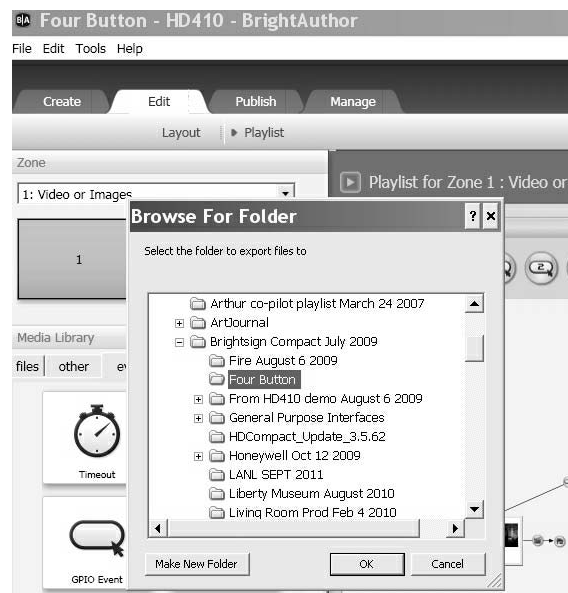
Select the location of the SD Memory Card

Click here to save presentation to SD Memory Card

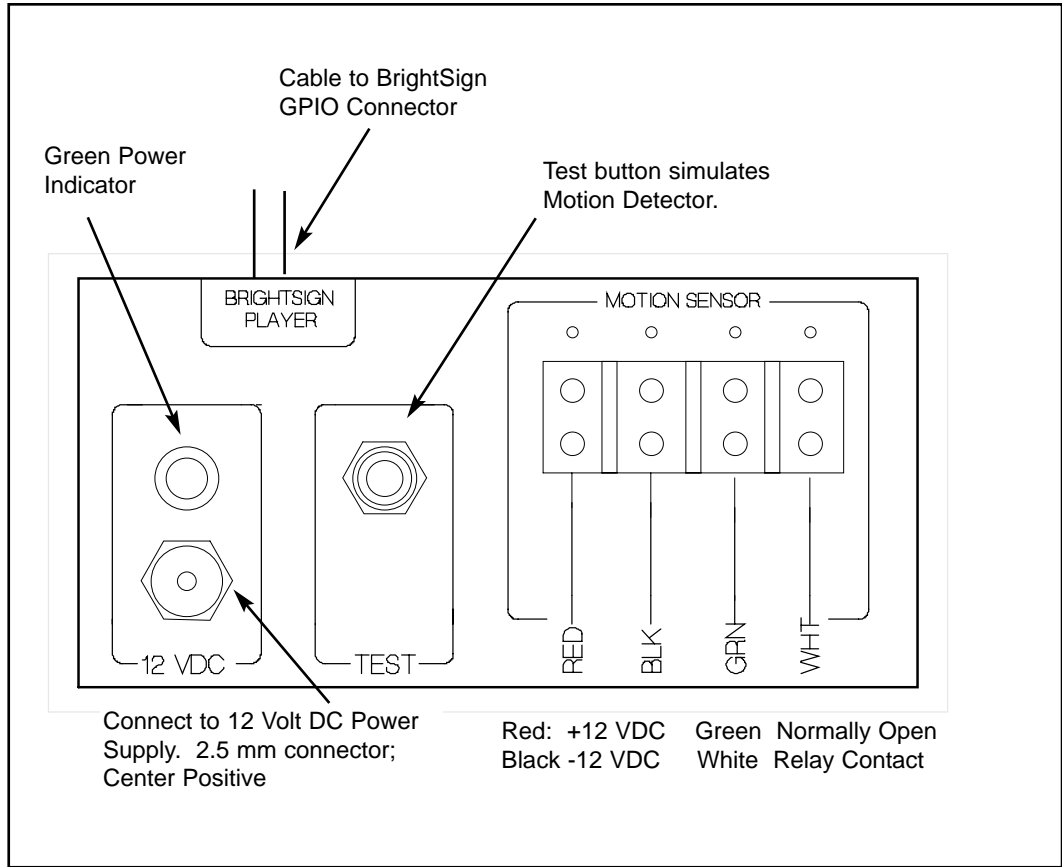
## Exporting the Presentation

There is a difference between **Publishing** and **Exporting** a presentation. The Publishing process manipulates and merges the files into a form readable by the BrightSign player. It is not possible to later edit a published presentation. Exporting a presentation keeps the files separate, so they may be loaded into BrightAuthor using the **File > Open Presentation** command. The exported files may then be editing on any computer running BrightAuthor.

To export a presentation select **Export** from the **File** menu, then browse to locate the folder in which the presentation is to be saved.



Export screen



## Connections

### Museum Technology Source Inc.

323 Andover Street    Wilmington MA 01887

800-729-6873 | 978-657-3898 | f 978-657-7132